



K H K SCAFFOLDING & FORMWORK LTD. L.L.C



EN Props



OUR PROFILE

Established in 1991, KHK Scaffolding & Formwork LLC has become a leading manufacturer and supplier of scaffolding, formwork, steel pipes and Tube products from GCC Region. Relying on top quality and best turnaround delivery time, it's wide range of products and services command high praise and acclaim from the reputed customers around the world.

KHK is the flagship company of UAE based Taurani Group of Industries, a prestigious business house, well recognized for its consistency and dependability as one of the most successful conglomerates in United Arab Emirates.

The office-cum-factory premises at Ajman covers an area 75,000 sq/mt, charged by highly motivated and efficient team of 1200 employees and is equipped with most advanced and integrated technology and machines to manufacture wide range of scaffolding, formwork, steel pipes and tube products strictly conforming to customer's designs requirements.

Carefully designed, high precision products of KHK are being exported for the last 25 years to more than 50 countries mainly in GCC, Middle East, Europe, America, Asia, Africa and Australia. The professional and experienced sales force of KHK, besides supplying the world class products, also support the global customers with their valuable services and technical guidance which in turn assures the contractors to deliver the projects in utmost secure and economical manner, maximizing their value addition. KHK always believes in testing its limits to the maximum by exploring, experimenting and establishing innovative products carrying lateral and horizontal expansions to meet diverse and challenging demands.



OUR VISION

'KHK' aspires to be the most trusted brand to all its worldwide customers and supply chain partners in Scaffolding and Formworks industry, embarking on excellence, relevance & value additions to all its offerings, with full Corporate and Social Responsibilities.

OUR MISSION

- Increasing the production capacity by 50% through process re-engineering by 2022.
- Augmentation in the sales turnover by 25% year over year.
- Continuous investment in human capital training, upskilling and automation.
- Make work life simpler, productive and customer friendly by implementation of SAP by June 2021
- Integration of processes by implementing SAP by 2021 and improve customer engagements through web portal by 2022
- Support go-green initiative of UAE along with digitalization of operations by 2022



EUROPEAN STANDARD EN 1065

- This standard sets out the relevant requirements for adjustable telescopic steel props with open threading. The standard covers straight props only.

The aim of EN 1065 is to define the structural properties of steel props in terms of safety and load bearing, grouping these products into 4 categories (B,C,D,E).

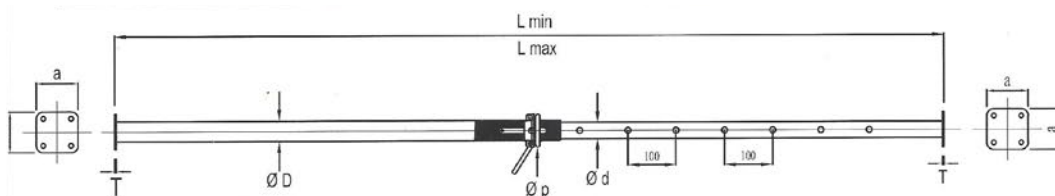
- A Prop is deemed compliant with the regulations as long as it had the following properties:
 - An anti-hand-trap system of at least 100mm in length.
 - At least 300mm of the inner tube must remain within the outer tube when the prop is fully extended.
 - A fixed anti-disengagement system making it impossible for the inner and outer tubes to come apart.
 - A system making it impossible for the adjusting device to slip off its thread.
 - A minimum adjustability of at least 1 meter
(length difference between fully-extended and fully-compressed)
 - Attached pin with a nominal diameter greater than 13mm.
 - The prop must also fulfill the following requirements:

The diameters and thickness of the inner and outer tubes must be specified so that test (by calculation or by pressure testing) determine a satisfactory collapse load as define for the 4 categories of props, with the following load criteria.
 - Whatever the position of the prop, the collar nut should always cover at least 30mm of the thread on the outer tube - for class B props at least 3 full thread rotations should be covered by the nut, for classes C, D and E the nut should cover at least 4 full rotations.
 - The nominal diameter of the pin should be no less than 13mm.
 - The pin must be connected to the prop so that it cannot be detached unintentionally.
 - The inner and outer tubes of the prop must have permanent prevention against unintentional disengagement.
 - The endplates should be either square [SQ] or shaped [SH]. They must contain at least 2 holes.
 - Endplates must be made of a material with a minimum elastic limit of 235 N/mm, and have a minimum thickness of 6mm for props in classes B,C & D.
 - It should be possible to draw the following circles on endplates: 110mm diameter for class B props; 120mm for props in higher classes. Corners should be rounded off, maintaining a radius between 5 and 10mm.

EN 1065 PROPS

CHART OF PERMISSIBLE LOAD IN ACCORDANCE WITH THE EN 1065

EXTENSION [METERS]	CLASS 'B' WITH OPEN THREAD					
	B30 [kN]	B35 [kN]	B40 [kN]	B45 [kN]	B50 [kN]	B55 [kN]
5.4M						7.00
5.2M						8.00
5.0M					8.00	9.00
4.8M					8.50	9.00
4.6M					9.00	10.00
4.4M				9.00	10.00	11.00
4.2M				10.00	11.00	12.00
4.0M			10.00	11.00	12.00	14.00
3.8M			11.00	12.00	14.00	15.00
3.6M			12.00	14.00	15.00	17.00
3.4M		12.00	14.00	16.00	17.00	19.00
3.2M		14.00	16.00	18.00	20.00	22.00
3.0M	13.00	16.00	18.00	20.00	22.00	
2.8M	15.00	18.00	21.00	23.00		
2.6M	18.00	21.00	24.00	27.00		
2.4M	21.00	25.00	28.00			
2.2M	25.00	29.00				
2.0M	30.00					
1.8M	30.00					

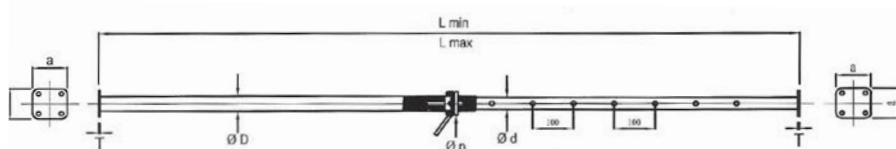


TYPE	Ø d (mm)	Ø D (mm)	Regulation	axa (mm)	T (mm)	Ø p (mm)	Lmin (mm)	Lmax (mm)	Weight (kg)
B30	48.3	60.3	G	120x120	6	14	1750	3000	12.0
B35	48.3	60.3	G	120x120	6	14	2000	3500	14.0
B40	48.3	60.3	G	120x120	6	14	2300	4000	17.0
B45	48.3	60.3	G	120x120	6	14	2500	4500	19.0
B50	48.3	60.3	G	120x120	6	14	2800	5000	24.0

EN 1065 PROPS

CHART OF PERMISSIBLE LOAD IN ACCORDANCE WITH THE EN 1065

EXTENSION [METERS]	CLASS 'C' WITH OPEN THREAD				
	C30 [kN]	C35 [kN]	C40 [kN]	C45 [kN]	C50 [kN]
5.0M					13.00
4.9M					13.50
4.8M					14.00
4.7M					15.00
4.6M					16.00
4.5M				15.00	17.00
4.4M				16.00	19.00
4.3M				17.00	20.00
4.2M				18.00	21.00
4.1M				21.00	23.00
4.0M			17.00	22.00	24.00
3.9M			18.00	25.00	26.00
3.8M			24.00	26.00	27.00
3.7M			25.00	28.00	29.00
3.6M			27.00	30.00	30.00
3.5M		21.00	27.00	31.00	32.00
3.4M		22.00	27.00	34.00	34.00
3.3M		26.00	27.00	34.00	34.00
3.2M		26.00	29.00	34.00	34.00
3.1M		26.00	30.00	34.00	34.00
3.0M	20.50	26.00	30.00	34.00	34.00
2.9M	22.50	26.00	30.00	34.00	34.00
2.8M	24.00	26.00	30.00	34.00	
2.7M	25.00	26.00	30.00	34.00	
2.6M	26.00	28.00	30.00	34.00	
2.5M	30.00	30.00	30.00		
2.4M	30.00	30.00	30.00		
2.3M	30.00	30.00	30.00		
2.2M	30.00	30.00			
2.1M	30.00	30.00			
2.0M	30.00				
1.9M	30.00				
1.8M	30.00				

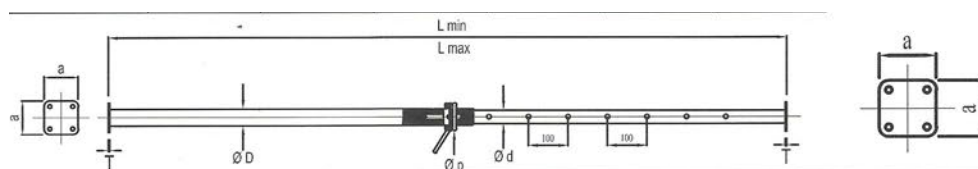


TYPE	Ø d (mm)	Ø D (mm)	Regulation	axa (mm)	T (mm)	Ø p (mm)	Lmin (mm)	Lmax (mm)	Weight (kg)
C30	48.3	60.3	G	120x120	8	16	1750	3000	17.0
C35	48.3	60.3	G	120x120	8	16	2000	3500	20.1
C40	63.5	76.1	G	120x120	8	16	2300	4000	24.0
C45	63.5	76.1	G	120x120	8	16	2500	4500	26.0
C50	63.5	76.1	G	120x120	8	16	2800	5000	28.0

EN 1065 PROPS

CHART OF PERMISSIBLE LOAD IN ACCORDANCE WITH THE EN 1065

EXTENSION [METERS]	CLASS 'C' WITH OPEN THREAD				
	D30 [kN]	D35 [kN]	D40 [kN]	D45 [kN]	D55 [kN]
5.0M					20.00
4.9M					20.00
4.8M					20.00
4.7M					20.00
4.6M					20.00
4.5M				20.00	20.00
4.4M				20.00	20.00
4.3M				20.00	20.00
4.2M				20.00	20.00
4.1M				20.00	20.00
4.0M			20.00	20.00	20.00
3.9M			20.00	20.00	20.00
3.8M			20.00	20.00	20.00
3.7M			20.00	20.00	20.00
3.6M			20.00	20.00	20.00
3.5M		20.00	20.00	20.00	20.00
3.4M		20.00	20.00	20.00	20.00
3.3M		20.00	20.00	20.00	20.00
3.2M		20.00	20.00	20.00	20.00
3.1M		20.00	20.00	20.00	20.00
3.0M	20.00	20.00	20.00	20.00	20.00
2.9M	20.00	20.00	20.00	20.00	20.00
2.8M	20.00	20.00	20.00	20.00	20.00
2.7M	20.00	20.00	20.00	20.00	
2.6M	20.00	20.00	20.00	20.00	
2.5M	20.00	20.00	20.00		
2.4M	20.00	20.00	20.00		
2.3M	20.00	20.00	20.00		
2.2M	20.00	20.00			
2.1M	20.00	20.00			
2.0M	20.00				
1.9M	20.00				
1.8M	20.60				

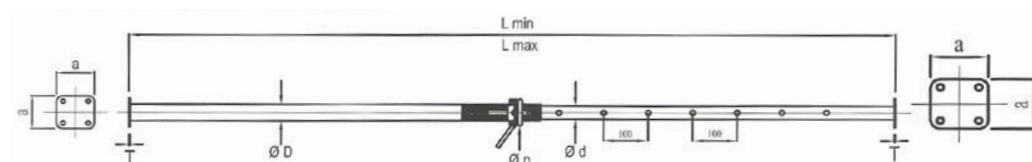


TYPE	Ø d (mm)	Ø D (mm)	Regulation	axa (mm)	T (mm)	Ø p (mm)	Lmin (mm)	Lmax (mm)	Weight (kg)
D30	48.3	60.3	G	120x120	8	16	1750	3000	17.0
D35	63.5	76.1	G	120x120	8	16	2000	3500	20.0
D40	63.5	76.1	G	120x120	8	16	2300	4000	24.0
D45	63.5	76.1	G	120x120	8	16	2500	4500	29.0
D55	76.1	88.9	G	120x120	8	16	3000	5500	38.0

EN 1065 PROPS

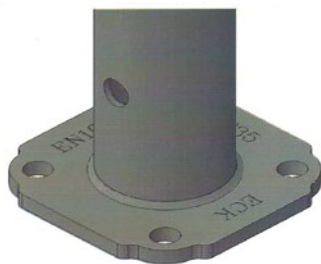
CHART OF PERMISSIBLE LOAD IN ACCORDANCE WITH THE EN 1065

EXTENSION [METERS]	CLASS 'E' WITH OPEN THREAD			
	E30 [kN]	E35 [kN]	E40 [kN]	E45 [kN]
5.0M				
4.9M				
4.8M				
4.7M				
4.6M				
4.5M				30.00
4.4M				30.00
4.3M				30.00
4.2M				30.00
4.1M				30.00
4.0M			30.00	30.00
3.9M			30.00	30.00
3.8M			30.00	30.00
3.7M			30.00	30.00
3.6M			30.00	30.00
3.5M		30.00	30.00	30.00
3.4M		30.00	30.00	30.00
3.3M		30.00	30.00	30.00
3.2M		30.00	30.00	30.00
3.1M		30.00	30.00	30.00
3.0M	30.00	30.00	30.00	30.00
2.9M	30.00	30.00	30.00	30.00
2.8M	30.00	30.00	30.00	30.00
2.7M	30.00	30.00	30.00	30.00
2.6M	30.00	30.00	30.00	30.00
2.5M	30.00	30.00	30.00	
2.4M	30.00	30.00	30.00	
2.3M	30.00	30.00	30.00	
2.2M	30.00	30.00		
2.1M	30.00	30.00		
2.0M	30.00			
1.9M	30.00			
1.8M	30.00			

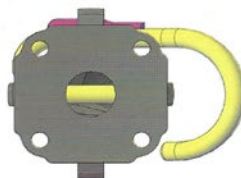


TYPE	Ø d (mm)	Ø D (mm)	Regulation	axa (mm)	T (mm)	Ø p (mm)	Lmin (mm)	Lmax (mm)	Weight (kg)
E30	63.5	76.1	G	120x120	8	16	1750	3000	19.0
E35	63.5	76.1	G	120x120	8	16	2000	3500	24.0
E40	63.5	76.1	G	120x120	8	16	2300	4000	28.0
E45	76.1	88.9	G	140x140	8	16	2500	4500	32.0

INNER TUBE END



PLAN



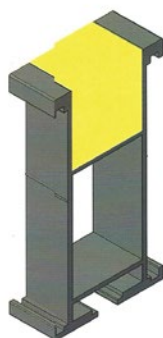
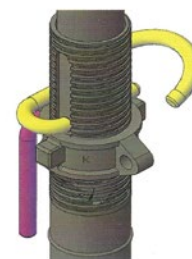
OUTER TUBE END



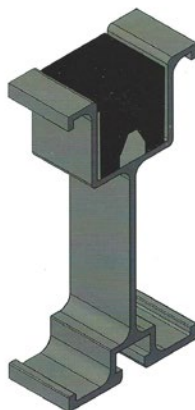
EN PROPS



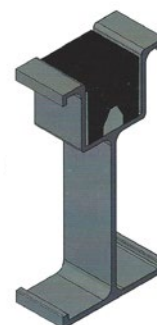
SLEEVE, PIN & PROP NUT WITH HANDLE



TWIN BEAM
(WITH TIMBER INSERT)



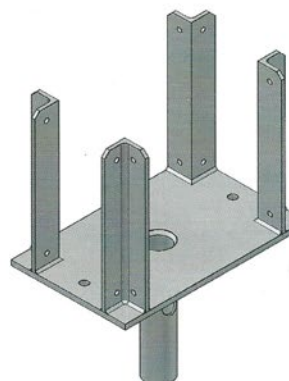
K6 ALUMINIUM BEAM
(WITH PLASTIC INSERT)



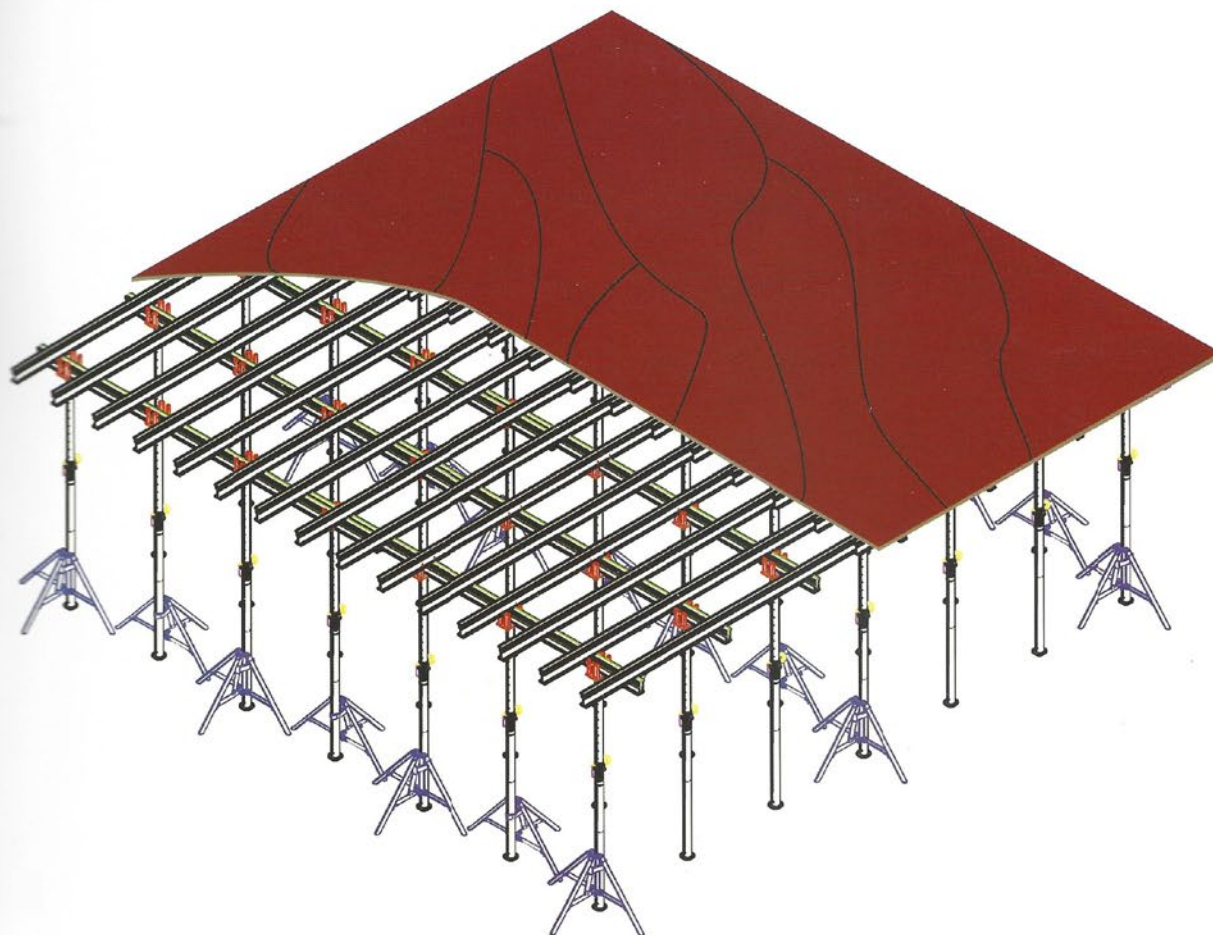
K6 X ALUMINIUM BEAM
(WITH PLASTIC INSERT)



EN PROPS TRIPOD



4 WAY FORK HED FOR
EN-PROPS



GROUP PROFILE



TAURANI
HOLDINGS LTD

TAURANI HOLDINGS LTD is a multinational conglomerate headquartered in Dubai, United Arab Emirates. It operates in four continents with more than 10,000 employees worldwide THL was founded in 1976 as a group of manufacturing, trading and servicing companies catering to a vast multitude of sectors across various markets.

With annual turn over of US\$200 Million, the group has eventually ventured into every trade arena through well-defined business strategies. An able leadership and a highly dedicated work force across the group are the key elements that engineer its evolution.

As a global business conglomerate, the group's ability to understand, innovate and operate in a multicultural world ensures its long-term sustainability and, specifically, impacts its ability to meet the group's underlined growth trajectory.

GROUP ASSOCIATES






KHK - Scaffolding & Formwork LLC

is at the cutting-edge of technology in scaffolding & formwork system solutions over more than 30 years.

Quality, reliability and timely delivery are our founding principles.

To explore more products and solutions, you may order individual catalogues on;

-  **K-RING ACCESS**
-  **K-LOCK SLAB FORMWORK**
-  **K-LOCK ACCESS**
-  **K-STAGE SLAB & ACCESS**
-  **FRAMES/TUBES/PROPS**
-  **WALL FORMWORK**
-  **EN PROPS**



Head Office & Factory:

New Industrial Area • P.O. Box: 2701, Ajman-U.A.E

Tel: +971-6-7439013, Fax: +971-6-7439017 • Email: khkscaf@emirates.net.ae

www.khk-scaffolding.com

Distribution Centres:



BRISKO SCAFFOLDING LIMITED

Unit 16, Kingsmill Business Park, Chapel Mill Lane,
Kingston upon Thames, KT1 3GZ, UK
Tel: +44-208 974 6923, Fax: +44-208 549 6850



PRIME METAL CORP. USA

653 State Route 52, Walden,
NY 12586 USA
Tel: +1-845 778 4545, Fax: +1-845 778 4218



WINSTON SCAFFOLDING PTY LTD.

T/A KHK Scaffoldings Australia
2 Stacey Street, Bankstown NSW 2200
Tel: +61-297 938 001, Fax: +61-297 932 382

ALLOY GLOBAL INC

2425 Matheson Blvd East, 8th Floor
Mississauga, ON L4W 5K4, Canada
Tel: +1-905 361 6400